

# **ARIADNA'S**

---

2025/26

# VIEWBOOK



**FANSHAWE**



# WHY FANSHAWE



- ▶ 200+ career focused programs
- ▶ 600+ academic pathways with 60+ institutions in 10 countries
- ▶ Flexible pathways to support your unique career goals
- ▶ \$5M+ in scholarships, awards and bursaries
- ▶ Hands-on learning built into each program
- ▶ 89.7% of our graduates secure employment within six months of graduation
- ▶ A diverse, supportive and fun place for you to thrive
- ▶ Guaranteed residence for first-year students\*
- ▶ Innovative and entrepreneurial partnerships that propel our communities forward

Inside this viewbook, you'll find key information about programs, admissions and student life.

*\*Guaranteed residence in London is available to first-year, full-time students attending any Fanshawe campus who apply before June 15, have confirmed their offer of admission, and have paid the non-refundable Residence deposit as well as the first Residence payment by the deadline.*

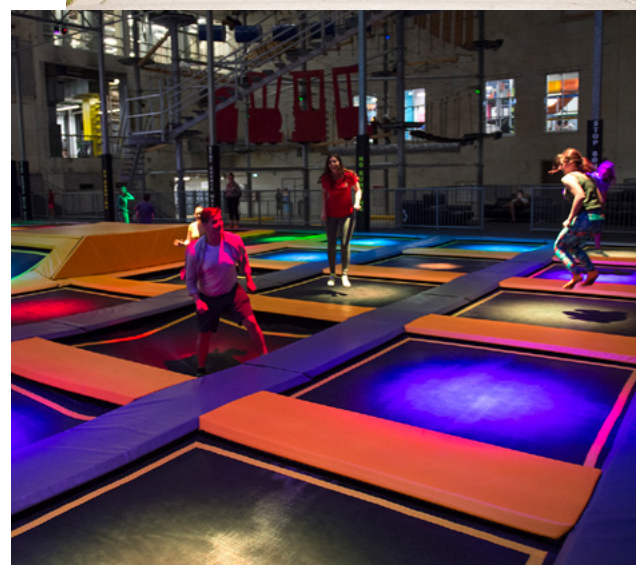




# ABOUT LONDON

When you call Fanshawe home, you become a part of a larger community. London is recognized in Canada and around the world as a centre for education and cutting-edge research. It's also one of Ontario's main business and cultural hubs. Eat, shop and experience life in one of the most vibrant, safe and student-friendly cities in Canada.

THIS IS COMMUNITY



## Did you know?

London is known as the "Forest City" with over 400 parks and 330 km of walking, biking and hiking trails. The city is located in a region surrounded by the world's largest freshwater lakes.

## FEATURES

- ▶ Populated by more than 400,000 residents in the City of London, with approximately 20% being immigrants to Canada
- ▶ A college and university town with more than 60,000 students who study at Fanshawe College and Western University every year
- ▶ Home to Canada Life Place, a facility located in the heart of downtown that draws big names in music, entertainment and sports
- ▶ A site for world-renowned medical and research facilities
- ▶ Explore art galleries, festivals, farm markets, theatres and nightlife
- ▶ Worship at more than 175 churches, temples, cathedrals, mosques and synagogues
- ▶ Accessible transit including bus and train stations and an international airport
- ▶ Ideally located two hours by car from Toronto or Niagara Falls, with close proximity to U.S. border crossings to Michigan and New York states

## TAKE A VIRTUAL TOUR OF THE CAMPUS

[fanshawec.ca/virtualtour](https://fanshawec.ca/virtualtour)

Scan here ▶





# LONDON LOCATIONS

Fanshawe offers programs at various campuses and sites throughout London, Ontario including our London Campus in the east end of the city, London South Campus in the south end and London Downtown Campus in the city's core.



## LONDON CAMPUS

London's extensive flagship campus boasts 100 acres of property and houses the bulk of Fanshawe's programs. Two additional London sites, the Centre for Applied Transportation Technologies and the Fanshawe Aviation Centre (at the London International Airport), are home to their industry-specific programs and specialized state-of-the-art facilities.

### Campus Highlights:

- Broadcasting Media studios
- Centre for Applied Research and Innovation in Biotechnology (CARIB) lab
- Diane Blake Centre of Excellence in XR
- Kalihwiyo Circle Indigenous Gathering Space
- Innovation Village
- Library Learning Commons
- mend Student Massage Clinic
- Simulation labs
- Oral Health Clinic
- Student Wellness Centre
- and much more!

## LONDON DOWNTOWN CAMPUS

Study in the heart of London, where students are just steps from employers aligned with our programs in arts, digital creative, tourism, hospitality and culinary arts.

### Campus Highlights:

- School of Tourism, Hospitality and Culinary Arts programs
- The Chef's Table at Fanshawe College: teaching restaurant, café and market
- School of Media and Digital Arts programs
- Student Service Hub
- The Good Foundation Inc. Theatre

## LONDON SOUTH CAMPUS

The campus is located in – you guessed it – south London, close to the 401 highway and houses five graduate certificate programs.

### Campus Highlights:

- State-of-the-art classrooms and computer labs
- Library and resource centre
- Cafeteria, as well as multiple lounges and study spaces
- Student union games room
- Free parking
- Public transit at the doorstep
- Great part-time work options nearby
- Close to plenty of dining options, entertainment and shopping, including White Oaks Mall





# REGIONAL LOCATIONS



When you study at a regional campus, you'll benefit from the best of both worlds: the programs and services of a large college along with the familiarity and close-knit community of a smaller campus.



## Did you know?

Fanshawe offers Early Childhood Education and Personal Support Worker at **every** regional campus, as well as in London, preparing students for high-demand careers in our communities.



## FEATURES

- ▶ Post-secondary programs meet local labour market needs of in-demand careers
- ▶ Costs are more economical with free parking and lower student fees
- ▶ Easy access to one-on-one faculty and staff support
- ▶ Community and industry partnerships foster networking opportunities with regional employers
- ▶ Engaging activities and events provide fun student life experiences
- ▶ Continuing Education programming offers adult academic upgrading, accelerated career training and general interest courses
- ▶ **Free** employment services provided to community members in Simcoe, St. Thomas and Aylmer



## SIMCOE/NORFOLK REGIONAL CAMPUS

Browse all programs at [fanshawec.ca/simcoe](https://fanshawec.ca/simcoe)

Programs unique to Simcoe:

- Adventure Expeditions and Interpretive Leadership | Diploma
- Agri-Business Management | Graduate Certificate
- Developmental Services Worker (Accelerated) | Diploma\*
- Early Childhood Education (Accelerated) | Diploma\*

\* Intakes every six weeks!

## ST. THOMAS/ELGIN REGIONAL CAMPUS

Browse all programs at [fanshawec.ca/stthomas](https://fanshawec.ca/stthomas)

Programs unique to St. Thomas:

- General Machinist | Apprenticeship
- Industrial Mechanic - Millwright | Apprenticeship
- Mechanical Engineering Technician - CNC/CAM (Co-op) | Diploma
- Mechanical Engineering Technician - Industrial Maintenance | Diploma
- Renewable Energies Technician (Co-op) | Diploma
- Tool and Die Maker | Apprenticeship

## WOODSTOCK/OXFORD REGIONAL CAMPUS

Browse all programs at [fanshawec.ca/woodstock](https://fanshawec.ca/woodstock)

Programs unique to Woodstock:

- Business - Entrepreneurship and Management | Diploma
- Educational Support (*Educational Assistant*) | Diploma
- Hair Stylist | Diploma or Apprenticeship
- Heating, Refrigeration and Air Conditioning Technician (Co-op) | Diploma
- Police Foundations (Accelerated) | Diploma
- Residential Air Conditioning Systems Mechanic | Apprenticeship

## HURON/BRUCE REGIONAL SITES

Clinton | Tiverton

Plus live streaming to additional communities!

Browse all programs at [fanshawec.ca/huron-bruce](https://fanshawec.ca/huron-bruce)

Programs offered in

- Education
- Health
- Trades



# STUDENT EXPERIENCE

## THIS IS BELONGING

Experience a vibrant and welcoming community. The Fanshawe student experience offers opportunities for growth, new connections, lasting memories and a place where you belong.

### LEARNING & EMPOWERMENT

Experience academic and personal growth. At Fanshawe, we focus on empowering our students to achieve their goals and aspirations.

- ▶ Academic Advisors provide one-to-one support through the academic journey
- ▶ Passionate professors offer knowledge and guidance
- ▶ Peer tutors help you gain an understanding of course material

### RELATIONSHIPS & CONNECTIONS

Opportunities for lasting relationships can be found everywhere - you just have to look for them! Connect with friends, faculty and mentors.

- ▶ Expand your circle of friends through intramural or varsity sports or get involved in Fanshawe Student Union clubs and leadership opportunities
- ▶ Career and Co-op consultants offer one-to-one employment coaching
- ▶ Student Service staff can be found across each campus - they're there to help when you need it

### VIBRANT EXPERIENCES

Lasting memories are formed in many ways, from large-scale events and program-specific experiences to the smallest interactions - which sometimes have the largest impact. We embrace them all.

- ▶ Pre-orientation and Orientation programming will prepare you to succeed
- ▶ Participating in industry-focused work and study experiences
- ▶ Little things can be big things: receiving support from a professor, stumbling upon a small event on campus or feeling special when the barista remembers your coffee order!

### WELLNESS & WELLBEING

A meaningful college experience includes prioritizing mental wellbeing. Each day may look and feel different, so there are a variety of ways to find support if and when you need it.

- ▶ Stay active and feel good by taking advantage of our amazing three-floor Student Wellness Centre. Whether you're new to fitness or have a set routine - everyone is welcome
- ▶ Feeling down or anxious? Our personal counsellors can help you navigate a variety of challenges
- ▶ Have a documented disability? Our team of Accessibility counsellors help you create an accommodation plan that sets you up for success

## HERE FOR YOU

[fanshawec.ca/hereforyou](https://fanshawec.ca/hereforyou)

This is a core principle that inspires our relationship with you, our students. This is your life, and your student journey, but the reason we show up every day is to support you. The Here For You brand is intended to help you learn about and access all of the supports available to you.



# FINANCIAL SUPPORT

We know there's a lot to consider when it comes to making financial plans for your education. We provide student support, financial aid options and resources to help you along the way. There are a variety of financial supports to help you pay for college at Fanshawe:

## FIRST-YEAR STUDENT FUNDING

- ▶ **Entrance bursary:** Offering up to \$2,000 for eligible applicants
- ▶ **Additional entrance scholarships and bursaries** with funding ranging from \$1,000 to \$20,000 per student. Scan to learn about these opportunities
- ▶ **OSAP** (*Ontario Student Assistance Program*) helps full-time, part-time and microcredential students pay for college through a combination of grants and loans. **Learn about applications and deadlines at:** [fanshawec.ca/OSAP](https://fanshawec.ca/OSAP)



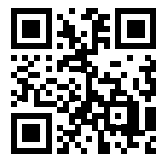
## ADDITIONAL FUNDING ONCE YOU'RE HERE:

- ▶ **+130** unique bursaries
- ▶ **+\$5 million** in scholarship, award and bursary funding available to students at various points

[fanshawec.ca/payingforcollege](https://fanshawec.ca/payingforcollege)

## CURIOUS ABOUT OTHER FUNDING OPTIONS?

Check out our blog on the *Top 5 Sources of Student Financial Assistance in Canada!*



APPLY NOW! [fanshawec.ca/apply](https://fanshawec.ca/apply)

## PLAN AHEAD

The **total cost** of tuition, fees, supplies and other expenses can vary based on program, delivery, campus location and more. Generally, programs requiring highly specialized labs, equipment and program materials have higher costs.

Here are some guidelines to help you budget for college. For program-specific costs, visit [fanshawec.ca/fees](https://fanshawec.ca/fees) or your program webpage.

### Tuition range per academic year (two terms) excluding student/ancillary fees:

- ▶ Certificate: \$1036 - \$3,594\*
- ▶ Diploma: \$2,472 - \$6,944\*
- ▶ Advanced Diploma: \$2,404 - \$11,142\*
- ▶ Honours Bachelor Degree: \$6,060 - \$6,490\*
- ▶ Collaborative Degree: \$6,040\*
- ▶ Graduate Certificate: \$2,720 - \$12,456\*

### Other costs to consider:

- ▶ Student/Ancillary Fees: \$729 - \$3,861\*
- ▶ Books and Supplies: \$1,850
- ▶ Living Expenses (at home, on campus or off campus)
- ▶ Transportation and Parking
- ▶ Food (meal plan vs. grocery shopping)
- ▶ Entertainment

**\*NOTE:** These are approximate amounts only. Costs for tuition, student/ancillary fees, books and supplies all vary by program.

THIS IS  
SUPPORT



### Did you know?

Over **60%** of Fanshawe students work part-time while studying! Every student has a dedicated Career Services Consultant who can help you find part-time work or employment after graduation.



# RESIDENCE

Live the ultimate campus experience and enjoy a convenient, safe and social living environment.

## WHY CHOOSE RESIDENCE?

- ▶ On-site supports and amenities: Achieve academic success and make lifelong memories with other students
- ▶ Enjoy a private bedroom with an oversized double bed
- ▶ Never miss out on campus events and activities!
- ▶ Controlled access to your building, suite and private room along with on-site management with 24/7 front desk staff



Scan to experience a virtual tour of Residence  
[fanshawec.ca/residence](https://fanshawec.ca/residence)



## GUARANTEED RESIDENCE FOR 1<sup>ST</sup> YEAR STUDENTS!\*

\* Guaranteed residence in London is available to first-year, full-time students attending any Fanshawe campus who apply before June 15, have confirmed their offer of admission, and have paid the non-refundable Residence deposit as well as the first Residence payment by the deadline. Residence is also available for upper-year students, subject to availability.

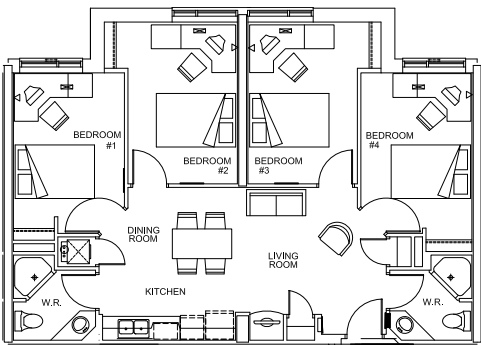
### TRADITIONAL LAYOUT

#### Features

- ▶ Four individually locked private bedrooms
- ▶ Two in-suite 3-piece bathrooms
- ▶ Kitchenette with microwave and fridge
- ▶ Dining and living space with TV

#### Approximate Cost

- ▶ Residence Fee: \$8,600
- ▶ Meal Plan: \$1,200\*



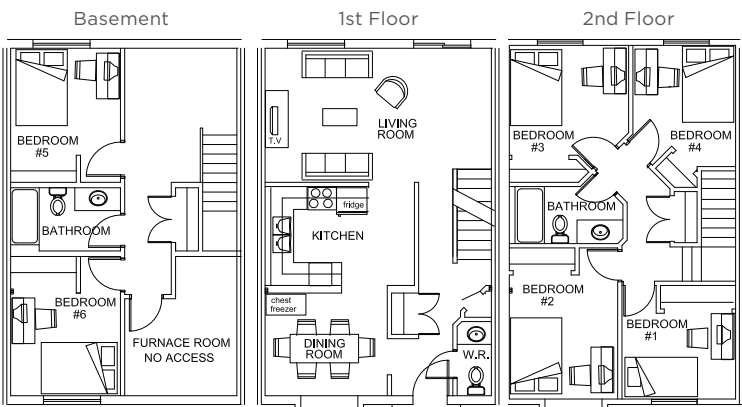
### TOWNHOUSE LAYOUT

#### Features

- ▶ Six individually locked private bedrooms
- ▶ Two 3-piece bathrooms, one half bathroom
- ▶ Full kitchen with fridge, chest freezer, stove, microwave, and dishwasher
- ▶ Dining and living areas with TV

#### Approximate Cost

- ▶ Residence Fee: \$8,100\* Standard Bedroom
- ▶ Residence Fee: \$7,850\* Small Bedroom



## STUDYING AT A REGIONAL CAMPUS?

No problem! While regional campuses don't have College-operated residences, they do maintain a list of available housing options in their communities. Please visit the **Off-Campus Housing Info & Listings** page on our website (listed below) to explore options.

## OFF-CAMPUS LIVING

Not interested in Residence? London is a student-friendly city with a wide variety of accommodations close to campus.

Start your search with Fanshawe's list of off-campus housing options. See current postings with photos, amenities, maps and contact information.

[fanshawec.ca/housing](https://fanshawec.ca/housing)

\*All applications require an additional \$100 non-refundable application fee

Prices based on the 2024/2025 rates pending board approval. All prices are subject to change.

**APPLY NOW!** [fanshawec.ca/apply](https://fanshawec.ca/apply)



# FANCARD FEATURES

Your FANCard is your official Fanshawe student identification card. Keep life simple and use it as your bus pass\*, access on-campus services and pay for food, printing and more.

[fanshawec.ca/FANCard](https://fanshawec.ca/FANCard)

\* Full-time London students in programs with classes on campus (blended format)

## DID YOU KNOW?

Save time and avoid line ups by uploading your photo online and completing the verification process to receive your FANCard before starting classes.



## BUS PASS

A London Transit Commission bus pass is included within your program's fees for all full-time students in programs with classes on campus (blended format) in London. Simply hop on a bus and tap your FANCard.

## SERVICES & BUILDING ACCESS

- ▶ Access after-hours building entrances, computer labs and specialized program-specific facilities
- ▶ Access the Student Wellness Centre at the London Campus
- ▶ Access books and materials from the Library Learning Commons. Your FANCard is your library card

## FLEX PLAN / MEAL PLAN

No need to carry cash: just load and use your FANCard. By logging in at [fancard.fanshawec.ca](https://fancard.fanshawec.ca), you can track your purchases online and carry over your unused balances to the next academic year. Use your card for:

- ▶ Food outlets
- ▶ Retail
- ▶ Printing
- ▶ Photocopying
- ▶ General parking lots at the London Campus

### Non-residence students:

Load your Flex Plan at [fancard.fanshawec.ca](https://fancard.fanshawec.ca) with as little as \$5 and use it for food, printing and retail purchases.

### Residence students:

Your mandatory Meal Plan starts at \$1,200 with the option to purchase additional amounts throughout the year, or you can add additional funds to a Flex Plan.

## WHERE TO EAT

Use your FANCard, debit, credit or cash to purchase food at a variety of eateries and vending machines across the London Campus\*, such as:

**pizza pizza**

**SUBWAY**

**Tim Hortons**



**Booster Juice**



Find a complete list of our food service options across campuses, online!

[fanshawec.ca/food](https://fanshawec.ca/food)

*\*hours and availability of dining options may be limited by public health regulations.*

## STUDYING AT A REGIONAL CAMPUS?

Eating options at regional campuses include vending machines and microwave ovens, a full-service cafeteria at the St. Thomas location as well as many nearby local restaurants.

*Note: Use of the FANCard for purchasing food is only available at the London Campus.*

APPLY NOW! [fanshawec.ca/apply](https://fanshawec.ca/apply)



# HEALTH & WELLNESS

Your health and wellness are among our top priorities. Whether you're looking to improve your physical health or mental well-being, we're dedicated to providing services that help you create the best college experience you can — **all steps away from residence!**

## STUDENT WELLNESS CENTRE

Access to our state-of-the art Student Wellness Centre, a dedicated three-floor fitness facility at the London Campus, is included in your tuition! Here are some of our most popular programs and services:

- ▶ Group fitness classes (spin, yoga, muscle conditioning, etc.)
- ▶ 36-foot rock climbing wall
- ▶ Golf simulator
- ▶ Nutrition and wellness classes
- ▶ Squash and table tennis courts

## SPORTS & RECREATION

- ▶ We have the largest college recreation program in Canada including 13 different intramural sports programs!

[studentwellnesscentre.ca](http://studentwellnesscentre.ca)

## FITNESS ORIENTATION SESSIONS:

Are you just starting your fitness journey? We provide personalized sessions that teach you how to warm-up, cool down and use the equipment safely to ensure you are getting the best out of your workouts.

Find more health and wellness services online!

[fanshawec.ca/health-wellness](http://fanshawec.ca/health-wellness)

## MENTAL HEALTH, COUNSELLING, ACCESSIBILITY

- ▶ Our professionally trained counsellors have a wealth of experience and knowledge and can assist you in areas such as mental health, substance use, relationships, and other personal concerns that might impact your academic success
- ▶ Do you have a disability? Our Accessibility Services team will discuss your needs and facilitate accommodations to help you on your road to success

Learn how to complete your early ID online:

[fanshawec.ca/earlyID](http://fanshawec.ca/earlyID)



# ATHLETICS

Take your game to the **next level** with one of the best athletics programs in Canada.

- ▶ 20+ national championships
- ▶ 140+ provincial championships
- ▶ 200+ student-athletes annually

THIS IS  
TEAMWORK

## VARSITY SPORTS

- ▶ Badminton
- ▶ Baseball
- ▶ Basketball
- ▶ Cross Country
- ▶ Curling
- ▶ Golf
- ▶ Indoor Soccer
- ▶ Soccer
- ▶ Softball
- ▶ Volleyball



Fanshawe's **Morgan Lowry** was named the 2021-22 Female Athlete of the Year after setting a new OCAA record for most strike outs in a single game with 19 and being named the OCAA Pitcher of the Year.

"Being a Fanshawe Falcon has taught me so much about hard work, commitment and discipline, which translates to success both academically and athletically. The Music Industry Arts program has helped me develop industry connections and the necessary skills for me to succeed in my professional field. This combined with the work ethic and teamwork I learned through sport, ensure that I am ready to take on any challenges that I may face in my future. I would describe my time with the Fanshawe Falcons Cross Country team as both memorable and gratifying. Being a Falcon means being part of a family."

**Seth Marcaccio**  
*Fanshawe men's cross country national champion and CCAA Academic All-Canadian*

[fanshawefalcons.ca](https://fanshawefalcons.ca)





# INDIGENOUS STUDENT SUPPORT



Whether you're Status or Non-Status First Nations, Métis or Inuit, our staff at the Institute of Indigenous Learning are waiting to welcome you. Our staff come from across Turtle Island and we are your home away from home at Fanshawe!

## COMMUNITY AND BELONGING

- ▶ Participate in cultural and spiritual supports, such as a visiting Knowledge Keeper
- ▶ Lounge/study area: socialize, study, enjoy a meal with us or simply relax

## ACADEMIC AND CAREER GUIDANCE

- ▶ Friendly, knowledgeable staff available to help with academic challenges
- ▶ Career planning and job search guidance

## WELLNESS AND WELLBEING

- ▶ We offer counselling support for any personal issues you may be experiencing
- ▶ Quiet spaces: use our computer lab for homework or to connect with friends and family



## INTRODUCE YOURSELF

Complete our simple self-identification form.



Why self-ID as Indigenous? We offer free programming to help you on your educational journey! Complete the form and we will share updates on upcoming events and programs.

## GET TO KNOW US!

Contact our Indigenous recruiters for guidance on questions such as:

- ▶ How can I complete my admission requirements?
- ▶ How can I access sponsorship funding?
- ▶ What is it like at Fanshawe?
- ▶ How can I meet other Indigenous students before my program begins?

## CONNECT WITH US!



[fanshawec.ca/Indigenous](https://fanshawec.ca/Indigenous)

APPLY NOW! [fanshawec.ca/apply](https://fanshawec.ca/apply)



# WHAT WE OFFER

Fanshawe is here to help you achieve your career goals with over 200 programs to choose from!

## Discover Your Career Fit

Use our Pathfinder tool to discover your career strengths and interests and find out which programs are the right fit for you. [fanshawepathfinder.ca](https://fanshawepathfinder.ca)

## Upgrade Your Education

Don't have a high school diploma? Missing courses for admission? Upgrade your education with grade 12 equivalency options for college, apprenticeship or employment. [fanshawec.ca/upgrading](https://fanshawec.ca/upgrading)

## Pathways to Advanced Diplomas and Degree

There are plenty of pathways to a career! Build on your certificate or diploma with an advanced diploma or degree. Grads may qualify for entry to an advanced year of a diploma or degree program at Fanshawe or other institutions. [fanshawec.ca/pathway-education](https://fanshawec.ca/pathway-education)



## PREP PROGRAMS

Explore your career interests and learn foundational knowledge and skills in a preparatory program, graduating with an Ontario College Certificate.

*8 months full-time | 2 years part-time*

## DIPLOMAS & ADVANCED DIPLOMAS

Gain the applied skills and knowledge to hit the ground running in your career, working in a technical or managerial role. Many programs also offer a co-op work experience so you can put your knowledge into practice.

*2-3 years full-time | 3-4 years part-time*

## DEGREES

Combine theoretical knowledge with experiential learning to work in higher-level management roles with our specialized honours degree programs.

*4 years full-time*



[fanshawec.ca/programs](https://fanshawec.ca/programs)

## GRAD STUDIES

Choose from 60+ graduate certificates to build on existing post-secondary education or previous work experience, or develop new, highly career-focused skills.

*8 months full-time | 2 years part-time*

## APPRENTICESHIPS

Prepare for a career in a skilled trade or occupation through employment-based training in an apprenticeship.

*Up to 5 years full-time*



# PREPARATORY PROGRAMS

Explore different career options and interests with Fanshawe's preparatory programs. These eight-month Ontario College Certificates give students the foundational knowledge and skills you need to discover your career interests and graduate with the confidence to enter your chosen field of study.

## WHY CHOOSE A PREP PROGRAM?

- ▶ Explore an area of study you may be interested in
- ▶ Discover different careers and interests
- ▶ Develop your portfolio and experience
- ▶ Gain the foundational skills you need to take the next step
- ▶ Provide the admissions requirements to continue your studies



## PREP FOR THE TRADES

If you'd like to pursue an apprenticeship or a career in the skilled trades, check out Pre-Technology and other one-year techniques programs to provide the foundational skills you need to get started!



[fanshawec.ca/prep](https://fanshawec.ca/prep)

## PREP PROGRAMS

Business Fundamentals  
Design Foundations  
Fine Art Foundation  
General Arts and Science-One Year  
Human Services Foundation  
Pre-Health Sciences Pathway to  
Advanced Diplomas and Degrees  
Pre-Media  
Pre-Technology  
Public Safety Fundamentals

### MAYUMI'S FANSHAWE PATHWAY:

Design Foundations Certificate  
↓  
Fashion Design Advanced Diploma





# DEGREES



## RYAN'S FANSHAWE PATHWAY

Business - Marketing Diploma



Business Administration -  
Marketing Advanced Diploma

*with semester abroad at  
Cesine University, Spain*



Honours Bachelor of Commerce -  
Digital Marketing

## Why Fanshawe degrees?

With **12 programs** to choose from, Fanshawe degrees give you the best of both worlds: theoretical knowledge combined with hands-on, experiential learning. That's why our graduates are uniquely skilled and in high demand.

- ▶ Career-focused learning
- ▶ An affordable investment compared to a university degree
- ▶ A perfect mix of industry experts and Ph.D. faculty committed to excellence in teaching and research
- ▶ Small class sizes
- ▶ Co-operative work experience and field practicums
- ▶ Pathways to a master's degree or teachers college\*
- ▶ Residence options both on and off campus
- ▶ Extensive student success services

\*While graduate schools review applications on an individual basis, many people have used college degrees as the basis for entry into graduate or professional schools.

## A **college degree** pays off.

Our degree graduates have the hands-on experience to hit the ground running in the workplace. That's why graduates of college degree programs are paid more on average in the first two years after graduation than university graduates!

Source: Statistics Canada, 2019

[fanshawec.ca/degrees](https://fanshawec.ca/degrees)



# AVIATION

Become a leader in the aerospace industry with a full spectrum of training in manufacturing, maintenance, fleet service, commercial flight and more, all housed in an industry-leading hangar facility.

## WHY FANSHAWE?

- ▶ Gain hands-on experience in our \$13-million hangar located at the London International Airport, which mirrors a real-world facility
- ▶ Train for an exciting career in Flight Services, developing the knowledge and skills to provide exceptional passenger service, while engaging in simulations to practice aircraft entry, exit and emergency procedures
- ▶ Practice your skills on our modern fleet of aircraft including various fixed-wing aircraft and helicopters
- ▶ Graduate ready to land a career at Air Canada, Diamond Aircraft, Jazz Airlines, WestJet and other leading employers, like many other Fanshawe alumni
- ▶ Train using the simulation-based Virtual Maintenance Trainer (VMT) to navigate equipment bays, remove components and see results in real-time



## PROGRAMS

### CERTIFICATE

- Aircraft Structural Repair Technician
- Flight Services
- Pre-Technology

### DIPLOMA

- Aviation Technician – Aircraft Maintenance (Co-op)
- Aviation Technician – Avionics Maintenance (Co-op)

### ADVANCED DIPLOMA

- Aviation Technology – Aircraft Maintenance and Avionics (Co-op)
- Commercial Flight and Aviation Leadership

### GRADUATE CERTIFICATE

- Aerospace Operations Management



### COMMERCIAL FLIGHT AND AVIATION LEADERSHIP

The Norton Wolf School of Aviation and Aerospace Technology has established one of the premier flight school destinations in Canada with the Commercial Flight and Aviation Leadership program. In this three-year program, students can complete their Fixed-Wing Canadian Private and Commercial Pilot license, as well as 750 hours of ground school training. Diamond Flight Centre London is partnered with Fanshawe to be the flight training provider of this program.



# CONSTRUCTION & TRADES

Learn to take an innovative approach to engineering, construction and trades, while developing your understanding of the importance of sustainable growth. In this high-demand career field, it's our job to help you establish a foundation of skills and build you up for career success.

## WHY FANSHAWE?

- ▶ Benefit from networking, co-operative education and career opportunities through strong connections to industry partners such as the London Home Builders' Association
- ▶ Develop hands-on skills with state-of-the-art carpentry, plumbing, fire safety and electrical labs
- ▶ Participate in special event builds with Habitat for Humanity, Airshow London and more
- ▶ Gain enhanced learning from cutting-edge technology infused into our programs, such as virtual reality, drone technology, laser scanning, 360 cameras, theodolites, total stations and more
- ▶ Take part in educational projects to conduct practical research, like using the solar arrays installed on Fanshawe buildings in London, which provide some of the heat for the campus' hot water supply and allow students to evaluate alternatives to traditional gas-based water heating methods



THIS IS PROGRESS



## WOMEN IN CARPENTRY INITIATIVE

Fanshawe is committed to empowering students. Our Women in Carpentry initiative offers:

- ▶ A friendly, supportive environment for success in Fanshawe's residential construction and renovation programs
- ▶ Mentoring program matching students with women in the industry to foster connections and confidence

## PROGRAMS

### CERTIFICATE

- Carpentry and Renovation Techniques
- Electrical Techniques
- Electrical Techniques (Weekend College)
- Plumbing Techniques
- Pre-Technology
- Welding Techniques

### DIPLOMA

- Carpentry and Renovation Technician (Co-op)
- Construction Engineering Technician (Co-op)
- Heating, Refrigeration and Air Conditioning Technician (Co-op)
- Welding and Fabrication Technician

### ADVANCED DIPLOMA

- Architectural Technology (Co-op)
- Building Renovation Technology (Co-op)
- Civil Engineering Technology (Co-op)
- Construction Engineering Technology (Co-op)

### APPRENTICESHIP

- Electrician - Construction/Maintenance
- General Carpenter
- Industrial Electrician
- Plumber
- Residential Air Conditioning Systems Mechanic
- Sheet Metal Worker
- Welding Techniques - Apprentice



# HEALTH SCIENCES

Intensive learning and training molds our students into skilled and compassionate healthcare professionals. They gain practical skills in purpose-built labs and benefit from community and clinical collaborations which take place in one of the top healthcare hubs in North America.

## WHY FANSHAWE?

- ▶ Experience innovative pharmacy simulations within the newly-renovated practice labs in both the Community Pharmacy Assistant and Pharmacy Technician programs
- ▶ Occupational Therapist Assistant and Physiotherapist Assistant diploma students develop strong practical skills by participating in three clinical placements in a variety of settings including hospitals, retirement homes and more
- ▶ Pre-Health Science graduates have an extremely high success rate in their subsequent demanding diploma and degree programs
- ▶ Study Fitness and Health Promotion to gain practical skills, build your client portfolio, and jump-start your career in a program connected to industry and university partners
- ▶ Immerse yourself in the future of healthcare with our new XR lab, offering state-of-the-art resources in extended reality (XR) and virtual reality (VR)
- ▶ Study at a college whose programs have made their mark globally, such as our highly-competitive Respiratory Therapy and Dental Hygiene programs. Students and faculty from these programs embark on Global Citizenship learning projects in Guatemala and Grenada, making a significant impact worldwide
- ▶ Earn clinical experience, like Dental Hygiene and Dental Assisting students who help the London community with affordable oral health care at our on-campus Oral Health Clinic

THIS IS  
LEARNING

## PROGRAMS

### CERTIFICATE

- Community Pharmacy Assistant
- Dental Assisting (Levels I and II)
- Pre-Health Sciences Pathway to Advanced Diplomas and Degrees
- Veterinary Assistant - **NEW**

### DIPLOMA

- Fitness and Health Promotion
- Occupational Therapist Assistant and Physiotherapist Assistant
- Pharmacy Technician
- Veterinary Technician - **NEW**

### ADVANCED DIPLOMA

- Dental Hygiene
- Massage Therapy (Accelerated)
- Medical Radiation Technology
- Respiratory Therapy

### GRADUATE CERTIFICATE

- Anesthesia Assistant
- Magnetic Resonance Imaging

### CHRISTINE'S FANSHAWE PATHWAY:

General Arts and Science Certificate  
↓  
Pharmacy Technician Diploma



# TOURISM, HOSPITALITY & RECREATION

The tourism, hospitality and recreation industry is all about embracing the people and places that make up our global community. Our programs will teach you how to help people live their best lives while providing you with a skill set that is employable anywhere.

## WHY FANSHAWE?

- ▶ Learn from industry-experienced faculty who have been trained around the globe and bring real-world experience to the classroom
- ▶ Connect with our network of recognized partners that offer opportunities for co-op work terms, field placements and future employment
- ▶ Continue your education with one of our partner institutions around the world with pathways to bachelor's and master's degrees
- ▶ Gain hands-on hospitality experience in our teaching restaurant and café, The Chef's Table at Fanshawe College



## PROGRAMS

### CERTIFICATE

- Tourism - Travel Studies

### DIPLOMA

- Adventure Expeditions and Interpretive Leadership (Co-op)
- Event Planning
- Golf and Club Management (Co-op)
- Recreation and Leisure Services
- Tourism - Travel (Co-op)

### VICTORIA'S FANSHAWE PATHWAY:

Recreation and Leisure Services Diploma



Bachelor of Arts in Therapeutic Recreation,  
University of Waterloo



Therapeutic Recreation Specialist,  
St. Joseph's Healthcare London





# HOW TO APPLY



[fanshawec.ca/apply](https://fanshawec.ca/apply)

## COMPETITIVE PROGRAMS

Some programs are considered highly competitive due to the number of applicants. Find out if your program is highly competitive and be sure to apply before the equal consideration application deadline to be considered for these programs.

[fanshawec.ca/competitive-programs](https://fanshawec.ca/competitive-programs)

## TRANSFERRING TO FANSHAWE?

If you started your education at another college or university, you may be eligible to continue or further your education at Fanshawe. There are a couple of ways to do this:

- ▶ Advanced standing – pathways to Fanshawe from another institution allow you to start in a higher semester or year of study
- ▶ External credit – if you're not eligible for a pathway, you can still apply to transfer credits on a course-by-course basis

[fanshawec.ca/transfer](https://fanshawec.ca/transfer)



## Gain academic credit for non-formal learning experience!

Your past learning through non-academic life experiences, such as employment or volunteering, can help you gain credit for up to 75% of a college diploma, or up to 50% of a college degree program through Prior Learning Assessment and Recognition (PLAR).

[fanshawec.ca/plar](https://fanshawec.ca/plar)



# FIND YOUR FIT!

Use our **Pathfinder tool** to discover your career strengths and interests and find out which programs you might be interested in at Fanshawe.

**[fanshawepathfinder.ca](https://fanshawepathfinder.ca)**

The most up to date admission requirements for your program can be found online!

Find your program webpage using your program's code from the following pages, and type it like this:  
**[fanshawec.ca](https://fanshawec.ca)/CODE.**

For example, for the Business diploma program (code: BUS1), go to **[fanshawec.ca](https://fanshawec.ca)/BUS1.**



# AVIATION

## CERTIFICATE

PROGRAM DETAILS	START	CAMPUS	ADMISSION REQUIREMENTS
<b>Aircraft Structural Repair Technician</b> 1-year Certificate (ASR1) ■	September	London Airport	English 12C or 12U <b>AND ONE of:</b> Math 12C or 12U
<b>Flight Services</b> 1-year Certificate (FLS1) ■	September	London Airport	Minimum requirements as stated at the bottom of this page.
<b>Pre-Technology</b> 1-year Certificate (PRT1) ■	September, January, May	London	Minimum requirements as stated at the bottom of this page.

## DIPLOMA

PROGRAM DETAILS	START	CAMPUS	ADMISSION REQUIREMENTS
<b>Aviation Technician – Aircraft Maintenance</b> 2-year Diploma (AAM4) ■+	September	London Airport	English 12C or 12U <b>AND ONE of:</b> Math 12C or 12U
<b>Aviation Technician – Avionics Maintenance</b> 2-year Diploma (AVM4) ■+	September	London Airport	English 12C or 12U <b>AND ONE of:</b> Math 12C or 12U

## ADVANCED DIPLOMA

PROGRAM DETAILS	START	CAMPUS	ADMISSION REQUIREMENTS
<b>Aviation Technology – Aircraft Maintenance and Avionics</b> 3-year Advanced Diploma (AVI2) ■+	September	London Airport	English 12C or 12U <b>AND ONE of:</b> Math 12C or 12U
<b>Commercial Flight and Aviation Leadership</b> 3-year Advanced Diploma (CFA1) ■	September, January	London Airport	English 12C or 12U <b>AND ONE of:</b> Math 12C or 12U <i>Minimum final grade required for each course is 65.</i>

## GRADUATE CERTIFICATE

PROGRAM DETAILS	START	CAMPUS	ADMISSION REQUIREMENTS
<b>Aerospace Operations Management</b> 1-year Graduate Certificate (AOM2) ■	September	London Airport	Post-secondary diploma, advanced diploma or degree <b>OR</b> equivalent qualification from another institution as judged by the College <b>OR</b> graduates of the Aircraft Structural Repair Technician certificate program will also be considered.

The minimum requirements for admission to all post-secondary programs is an Ontario Secondary School Diploma with courses from the College (C), University (U), University/College (M) or Open (O) stream or equivalent or mature student with the stated academic requirements. Graduate programs require a College Diploma or University Degree or equivalent. **Please visit [fanshawec.ca](http://fanshawec.ca) for more information and for the most current admission requirements.**

DELIVERY: ■ Full-time ● Full-time Online □ Part-time ○ Part-time Online + Co-op ◆ Weekend College | ▲ Competitive program



# CONSTRUCTION & TRADES

## CERTIFICATE

PROGRAM DETAILS	START	CAMPUS	ADMISSION REQUIREMENTS
<b>Carpentry and Renovation Techniques</b> 1-year Certificate (CRQ1) ■ 1-year Certificate (CRQ1C) ■	September  September	London  Kincardine	Math 12C or 12U  <i>Applicants who lack the required course may be admitted to the program subject to appropriate prior upgrading.</i>
<b>Electrical Techniques</b> 1-year Certificate (ELT1) ■	September, January	London	Minimum requirements as stated at the bottom of this page.
<b>Electrical Techniques (Weekend College)</b> 1-year Certificate (ELT1) ◆	September	London	Minimum requirements as stated at the bottom of this page.
<b>Plumbing Techniques</b> 1-year Certificate (PLQ1) ■	September	London	Minimum requirements as stated at the bottom of this page.
<b>Pre-Technology</b> 1-year Certificate (PRT1) ■	September, January, May	London	Minimum requirements as stated at the bottom of this page.
<b>Welding Techniques</b> 1-year Certificate (WTQ1J) ■ 1-year Certificate (WTQ1J) ■	September, January  September, May	Simcoe  St. Thomas	Minimum requirements as stated at the bottom of this page.

## DIPLOMA

PROGRAM DETAILS	START	CAMPUS	ADMISSION REQUIREMENTS
<b>Carpentry and Renovation Technician</b> 2-year Diploma (CRT1) ■+	September	London	Math 12C or 12U  <i>Applicants who lack the required course may be admitted to the program subject to appropriate prior upgrading.</i>
<b>Construction Engineering Technician</b> 2-year Diploma (CEN2) ■	September	London	English 12C or 12U <b>AND ONE of the following:</b> Mathematics for College Technology 12C (preferred) or Foundations for College Mathematics 12C (min. final grade 60) or Math Advanced Functions 12U or Math Calculus and Vectors 12U or Mathematics of Data Management 12U  <i>Applicants who lack required courses may be admitted to the program subject to appropriate prior upgrading.</i>  <i>Students entering with Foundations for College Mathematics 12C will be required to take additional preparatory mathematics as part of their program of study.</i>
<b>Heating, Refrigeration and Air Conditioning Technician</b> 2-year Diploma (MHT3W) ■+	September	Woodstock	Math 12C or 12U  <i>Applicants who lack the required Mathematics may be admitted into the program subject to appropriate prior upgrading.</i>
<b>Welding and Fabrication Technician</b> 2-year Diploma (WFT1) ■+	September, January	London	Math 12C or 12U  <i>Applicants who lack the required Mathematics may be admitted into the program subject to appropriate prior upgrading.</i>

The minimum requirements for admission to all post-secondary programs is an Ontario Secondary School Diploma with courses from the College (C), University (U), University/College (M) or Open (O) stream or equivalent or mature student with the stated academic requirements. Graduate programs require a College Diploma or University Degree or equivalent. **Please visit fanshawec.ca for more information and for the most current admission requirements.**

DELIVERY: ■ Full-time ● Full-time Online □ Part-time ○ Part-time Online + Co-op ◆ Weekend College | ▲ Competitive program

## ADVANCED DIPLOMA

PROGRAM DETAILS	START	CAMPUS	ADMISSION REQUIREMENTS
<b>Architectural Technology</b> 3-year Advanced Diploma (ATY1) ■+	September, January	London	English 12C or 12U <b>AND ONE of the following:</b> Mathematics for College Technology 12C (preferred) or Foundations for College Mathematics 12C (min. final grade 60) or Math Advanced Functions 12U or Math Calculus and Vectors 12U or Mathematics of Data Management 12U  <i>Applicants who lack required courses may be admitted to the program subject to appropriate prior upgrading.</i>  <i>Students entering with Foundations for College Mathematics 12C will be required to take additional preparatory mathematics as part of their program of study.</i>
<b>Building Renovation Technology (Co-op)</b> 3-year Advanced Diploma (BRY1) ■+	September	London	Math 12C or 12U  <i>Applicants who lack the required Mathematics may still gain eligibility for admission by completing appropriate prior upgrading.</i>
<b>Civil Engineering Technology (Co-op)</b> 3-year Advanced Diploma (CEY2) ■+	September, January	London	English 12C or 12U <b>AND ONE of the following:</b> Mathematics for College Technology 12C (preferred) or Foundations for College Mathematics 12C (min. 60 final grade) or Math Advanced Functions 12U or Math Calculus and Vectors 12U or Mathematics of Data Management 12U  <i>Applicants who lack the required courses may be admitted to the program subject to appropriate upgrading.</i>  <i>Students entering with Foundations for College Mathematics 12C will be required to take additional preparatory mathematics as part of their program of study.</i>
<b>Construction Engineering Technology - Management (Co-op)</b> 3-year Advanced Diploma (CMY3) ■+	September	London	English 12C or 12U <b>AND ONE of the following:</b> Mathematics for College Technology 12C (preferred) or Foundations for College Mathematics 12C (min. 60 final grade) or Math Advanced Functions 12U or Math Calculus and Vectors 12U or Mathematics of Data Management 12U  <i>Applicants who lack required courses may be admitted to the program subject to appropriate prior upgrading.</i>  <i>Students entering with Foundations for College Mathematics 12C will be required to take additional preparatory mathematics as part of their program of study.</i>

The minimum requirements for admission to all post-secondary programs is an Ontario Secondary School Diploma with courses from the College (C), University (U), University/College (M) or Open (O) stream or equivalent or mature student with the stated academic requirements. Graduate programs require a College Diploma or University Degree or equivalent. **Please visit fanshawec.ca for more information and for the most current admission requirements.**

DELIVERY: ■ Full-time ● Full-time Online □ Part-time ○ Part-time Online + Co-op ◆ Weekend College | ▲ Competitive program



# DESIGN & THE ARTS

## CERTIFICATE

PROGRAM DETAILS	START	CAMPUS	ADMISSION REQUIREMENTS
<b>Design Foundations</b> 1-year Certificate (DFN1) ■	September	London	Minimum requirements as stated at the bottom of this page.
<b>Fine Art Foundation</b> 1-year Certificate (FAF1) ■	September	London	Minimum requirements as stated at the bottom of this page.

## DIPLOMA

PROGRAM DETAILS	START	CAMPUS	ADMISSION REQUIREMENTS
<b>Fashion Marketing and Management</b> 2-year Diploma (FMC3) ■+	September	London	Minimum requirements as stated at the bottom of this page.
<b>GIS and Urban Planning</b> 2-year Diploma (URP2) ■●+	September	London	English 12C or 12U <b>AND ONE of:</b> Math 12C, 12U, 12M, 11C, 11U or 11M <i>Foundations for College Mathematics 12C is preferred.</i>
<b>Hair Stylist</b> 48-week Accelerated Diploma (HAS1W) ■  Part-time Diploma (approx. 3 years) (HAS1W) □	September, January  September	Woodstock  Woodstock	Minimum requirements as stated at the bottom of this page.
<b>Horticulture Technician</b> 2-year Diploma (HTN1) ■+	September	London	Minimum requirements as stated at the bottom of this page. <i>For POST-ADMISSION REQUIREMENTS, visit <a href="https://fanshawec.ca/post-admission-requirements">fanshawec.ca/post-admission-requirements</a></i>

<b>Interior Decorating</b> 2-year Diploma (ITD1) ■+	September	London	Math 12C, 12U, 11C, 11U or 11M
--	-----------	--------	--------------------------------

## ADVANCED DIPLOMA

PROGRAM DETAILS	START	CAMPUS	ADMISSION REQUIREMENTS
<b>Fashion Design</b> 3-year Advanced Diploma (DFS4) ■+	September, January	London	English 12C or 12U <b>AND ONE of:</b> Math 12C, 12U, 12M, 11C, 11U or 11M <i>Foundations for College Mathematics 12C is preferred.</i>
<b>Graphic Design</b> 3-year Advanced Diploma (GRD1) ■+●  Part-time Advanced Diploma (approx. 5 years) (GRD1) ●	September, January  September, January	London  London	English 12C or 12U <b>AND</b> completion of visual artwork and written response
<b>Landscape Design Technician</b> 2-year Diploma (DLN2) ■+	September	London	OSSD or equivalent, mature student status English 12C or 12U

The minimum requirements for admission to all post-secondary programs is an Ontario Secondary School Diploma with courses from the College (C), University (U), University/College (M) or Open (O) stream or equivalent or mature student with the stated academic requirements. Graduate programs require a College Diploma or University Degree or equivalent. **Please visit [fanshawec.ca](https://fanshawec.ca) for more information and for the most current admission requirements.**

DELIVERY: ■ Full-time ● Full-time Online □ Part-time ○ Part-time Online + Co-op ◆ Weekend College | ▲ Competitive program

## HONOURS BACHELOR DEGREE

PROGRAM DETAILS	START	CAMPUS	ADMISSION REQUIREMENTS
<b>Honours Bachelor of Environmental Design and Planning</b> 4-year Degree (BED1) ■+	September	London	English 12U <b>PLUS</b> five additional 12U or 12M courses <i>Final minimum average of 65 based on the highest six 12U or 12M courses.</i>
<b>Honours Bachelor of Interior Design</b> 4-year Degree (BID1) ■+	September	London	English 12U (min. final grade required is 65) <b>AND ONE of:</b> Math 12U, 11U or 11M <b>PLUS</b> four additional 12U or 12M courses <b>AND</b> completion of a digital portfolio and writing sample <i>Final minimum average of 65 based on the highest six 12U or 12M courses. Applicants applying with Math 11U or 11M must have five additional 12U or 12M courses.</i>

## GRADUATE CERTIFICATE

PROGRAM DETAILS	START	CAMPUS	ADMISSION REQUIREMENTS
<b>Geographic Information Systems (GIS)</b> 1-year Graduate Certificate (GIS1) ■+  Part-time Graduate Certificate (approx. 2 years) (GIS1) ○+	September, January  September	London  London	Post-secondary diploma, advanced diploma or degree <b>OR</b> equivalent qualification from another institution as judged by the College <b>OR</b> equivalent professional background and experience as judged by the College. <i>Minimum overall average of “B” (3.0 cumulative GPA) is required</i>

## APPRENTICESHIP

PROGRAM DETAILS	DELIVERY	CAMPUS	ADMISSION REQUIREMENTS
<b>332A Hairstylist</b> 8 weeks/Level 1, 2 Certificate (HAS1W)	Apprenticeship – Day Release*	Woodstock	Must be a registered apprentice with the Ministry of Labour, Immigration, Training and Skills Development (MLITSD), <b>AND</b> an active member of Skilled Trades Ontario.  <b>Note:</b> Offers to attend class are based on seniority as determined by the Ministry. Seats are purchased by MLITSD for this class.  <i>*Apprentices typically spend four days a week in the workplace, and attend in-school training for one day a week (part-time)</i>
<b>441C Horticulture Technician</b> 12 weeks/Level 1, 2 Certificate (HTA2)	Apprenticeship – Block Release*	London	Must be a registered apprentice with the Ministry of Labour, Immigration, Training and Skills Development (MLITSD), <b>AND</b> an active member of Skilled Trades Ontario.  <b>Note:</b> Offers to attend class are based on seniority as determined by the Ministry. Seats are purchased by MLITSD for this class.  <i>*Employers release apprentices from their work duties to attend in-school training (full-time) for approximately 8 weeks</i>

The minimum requirements for admission to all post-secondary programs is an Ontario Secondary School Diploma with courses from the College (C), University (U), University/College (M) or Open (O) stream or equivalent or mature student with the stated academic requirements. Graduate programs require a College Diploma or University Degree or equivalent. **Please visit [fanshawec.ca](https://fanshawec.ca) for more information and for the most current admission requirements.**

DELIVERY: ■ Full-time ● Full-time Online □ Part-time ○ Part-time Online + Co-op ◆ Weekend College | ▲ Competitive program



# INFORMATION TECHNOLOGY

## DIPLOMA

PROGRAM DETAILS	START	CAMPUS	ADMISSION REQUIREMENTS
<b>Computer Systems Technician</b> 2-year Diploma (CTN2) ■	September, January, May	London	English 12C or 12U <b>AND ONE of:</b> Math 12C, 12U, 12M, 11C, 11U or 11M <i>Applicants who lack the required Mathematics may still gain eligibility for admission by completing the appropriate prior upgrading.</i>
<b>Web Development and Internet Applications</b> 2-year Diploma (IWD2) ■●○*	September, January	London	English 12C or 12U <b>AND ONE of:</b> Math 12C, 12U, 12M, 11C, 11U or 11M <i>Applicants who lack the required Mathematics may still gain eligibility for admission by completing appropriate prior upgrading.</i> <i>* Completing this program on a part-time basis takes approximately 3 years.</i>

## ADVANCED DIPLOMA

PROGRAM DETAILS	START	CAMPUS	ADMISSION REQUIREMENTS
<b>Computer Programming and Analysis</b> 3-year Advanced Diploma (CPA3) ■+○*	September, January	London	English 12C or 12U <b>AND ONE of:</b> Math 12C, 12U, 12M, 11C, 11U or 11M <i>Applicants who lack the required Mathematics may still gain eligibility for admission by completing the appropriate prior upgrading.</i> <i>* Completing this program on a part-time basis takes approximately 6 years.</i>
<b>Computer Systems Technology</b> 3-year Advanced Diploma (CTY2) ■+	September	London	English 12C or 12U <b>AND ONE of:</b> Math 12C, 12U, 12M, 11C, 11U or 11M <i>Applicants who lack the required Mathematics may still gain eligibility for admission by completing the appropriate prior upgrading.</i>
<b>Cyber Security</b> 3-year Advanced Diploma (CYB1) ■+	September, January	London	English 12C or 12U <b>AND ONE of:</b> Math 12C, 12U or 12M (min. final grade 65) <i>Applicants who lack the required Mathematics may still gain eligibility for admission by completing appropriate prior upgrading.</i>

## GRADUATE CERTIFICATE

PROGRAM DETAILS	START	CAMPUS	ADMISSION REQUIREMENTS
<b>Artificial Intelligence &amp; Machine Learning</b> 1-year Graduate Certificate (AIM2) ■+	January, May	London	Post-secondary diploma, advanced diploma or degree <b>OR</b> equivalent software development education in computer science or related field <b>OR</b> a combination of relevant education and work experience in a related field as judged by the College.
<b>Game Development – Advanced Programming</b> 1-year Graduate Certificate (GDP1) ■	September	London	Computer Programmer Diploma <b>OR</b> Computer Programming and Analysis Advanced Diploma <b>OR</b> degree in computer science <b>OR</b> equivalent qualification from another institution as judged by the College <b>OR</b> a combination of relevant education and work experience in a related field as judged by the College.
<b>Health Systems Management</b> 1-year Graduate Certificate (HSY2) ■●○*	September, January, May	London	Post-secondary diploma, advanced diploma or degree in information technology, mathematics or health sciences (other backgrounds considered on a case-by-case basis) <b>OR</b> a combination of relevant education and work experience in a related field as judged by the College. <i>* Completing this program on a part-time basis takes approximately 2 years.</i>
<b>Information Security Management</b> 1-year Graduate Certificate (ISM1) ■●○*	September, January, May	London	Post-secondary diploma, advanced diploma or degree in a computing related field <b>OR</b> a combination of relevant post-secondary education and work experience in a related field as judged by the College. <i>* Completing this program on a part-time basis takes approximately 2 years.</i>
<b>Information Technology Infrastructure</b> 1-year Graduate Certificate (ITI2B) ■	September, January, May	London South	Post-secondary diploma, advanced diploma or degree <b>OR</b> a combination of relevant post-secondary education and work experience in a related field as judged by the College.

The minimum requirements for admission to all post-secondary programs is an Ontario Secondary School Diploma with courses from the College (C), University (U), University/College (M) or Open (O) stream or equivalent or mature student with the stated academic requirements. Graduate programs require a College Diploma or University Degree or equivalent. **Please visit fanshawec.ca for more information and for the most current admission requirements.**

DELIVERY: ■ Full-time ● Full-time Online ▣ Part-time ○ Part-time Online + Co-op ◆ Weekend College | ▲ Competitive program

PROGRAM DETAILS	START	CAMPUS	ADMISSION REQUIREMENTS
<b>Low-Code and No-Code</b> 1-year Graduate Certificate (LCN2) ■+	September	London	Post-secondary diploma, advanced diploma or degree <b>OR</b> a combination of relevant post-secondary education and work experience in a related field as judged by the College.
<b>Mobile Application Development</b> 1-year Graduate Certificate (MAP2) ■▣*	September, January, May	London	Prior post-secondary education, training or work experience (as judged by the College) in Information Technology with a focus on software programming. Prospective students should possess a solid foundation in software development and programming concepts. <i>* Completing this program on a part-time basis takes approximately 2 years.</i>
<b>Network and Security Architecture</b> 1-year Graduate Certificate (NSA1) ■+○*	September, January	London	Post-secondary diploma, advanced diploma or degree in a computing related field <b>OR</b> equivalent professional background and experience as judged by the College. <i>* Completing this program on a part-time basis takes approximately 2 years.</i>
<b>Software and Information Systems Testing</b> 1-year Graduate Certificate (SST3) ■+○*	September, January, May	London Downtown	Post-secondary diploma, advanced diploma or degree in Business or Information Technology <b>OR</b> a combination of relevant education and work experience in a related field as judged by the College. <i>* Completing this program on a part-time basis takes approximately 2 years.</i>
<b>Technical Data Analytics</b> 1-year Graduate Certificate (TDA2) ■+	January	London	Post-secondary diploma, advanced diploma or degree in Computer Science/Information Technology <b>OR</b> a combination of relevant post-secondary education and work experience in a related field as judged by the College.
<b>Technical Systems Analysis</b> 1-year Graduate Certificate (TSS2) ■+	September, January, May	London	Post-secondary diploma, advanced diploma or degree in an information technology related field <b>OR</b> a combination of relevant post-secondary education and work experience in a related field as judged by the College.

The minimum requirements for admission to all post-secondary programs is an Ontario Secondary School Diploma with courses from the College (C), University (U), University/College (M) or Open (O) stream or equivalent or mature student with the stated academic requirements. Graduate programs require a College Diploma or University Degree or equivalent. **Please visit fanshawec.ca for more information and for the most current admission requirements.**

DELIVERY: ■ Full-time ● Full-time Online ▣ Part-time ○ Part-time Online + Co-op ◆ Weekend College | ▲ Competitive program



# TRANSPORTATION

## CERTIFICATE

PROGRAM DETAILS	START	CAMPUS	ADMISSION REQUIREMENTS
<b>Auto Body Repair Techniques</b> 1-year Certificate (ABT1) ■	September, January	London	Minimum requirements as stated at the bottom of this page.

<b>Pre-Technology</b> 1-year Certificate (PRT1) ■	September, January	London	Minimum requirements as stated at the bottom of this page.
--	--------------------	--------	--

## DIPLOMA

PROGRAM DETAILS	START	CAMPUS	ADMISSION REQUIREMENTS
<b>Motive Power Technician (Automotive)</b> 2-year Diploma (MTA7) ■  2-year Diploma (MTA9) ■+	September, January, May  September	London  London	Minimum requirements as stated at the bottom of this page.

<b>Motive Power Technician (Diesel)</b> 2-year Diploma (MTD7) ■  2-year Diploma (MTD9) ■+	September, January, May  September	London  London	Minimum requirements as stated at the bottom of this page.
--	--	----------------------	--

<b>Green Vehicle Technician</b> 2-year Diploma (GVN2) ■	September	London	Minimum requirements as stated at the bottom of this page.
--	-----------	--------	--

The minimum requirements for admission to all post-secondary programs is an Ontario Secondary School Diploma with courses from the College (C), University (U), University/College (M) or Open (O) stream or equivalent or mature student with the stated academic requirements. Graduate programs require a College Diploma or University Degree or equivalent. **Please visit fanshawec.ca for more information and for the most current admission requirements.**

DELIVERY: ■ Full-time ● Full-time Online ▣ Part-time ○ Part-time Online + Co-op ◆ Weekend College | ▲ Competitive program

## APPRENTICESHIP

PROGRAM DETAILS	DELIVERY	CAMPUS	ADMISSION REQUIREMENTS
<b>425A Agricultural Equipment Technician</b> 8 weeks/Level 1, 2, 3 Certificate (FET2)	Apprenticeship – Block Release*	London	Must be a registered apprentice with the Ministry of Labour, Immigration, Training and Skills Development (MLITSD), <b>AND</b> an active member of Skilled Trades Ontario.  <b>Note:</b> Offers to attend class are based on seniority as determined by the Ministry. Seats are purchased by MLITSD for this class.  * Employers release apprentices from their work duties to attend in-school training (full-time) for approximately 8 weeks

<b>425A Agricultural Equipment Technician – John Deere Tech</b> 16 weeks/Level 1; 12 weeks/Level 2; 12 weeks/Level 3 Certificate (JDA2)	Apprenticeship – Block Release* – Enhanced	London	Must be a registered apprentice with the Ministry of Labour, Immigration, Training and Skills Development (MLITSD), <b>AND</b> an active member of Skilled Trades Ontario.  <b>Note:</b> John Deere Dealer Registration  * Employers release apprentices from their work duties to attend in-school training (full-time) for approximately 8 weeks
--	--	--------	--

<b>310B Auto Body and Collision Damage Repairer</b> 8 weeks/Level 1, 2 9 weeks/Level 3 Certificate (ABC6)	Apprenticeship – Branch I – Block Release*	London	Must be a registered apprentice with the Ministry of Labour, Immigration, Training and Skills Development (MLITSD), <b>AND</b> an active member of Skilled Trades Ontario.  <b>Note:</b> Offers to attend class are based on seniority as determined by the Ministry. Seats are purchased by MLITSD for this class.  * Employers release apprentices from their work duties to attend in-school training (full-time) for approximately 8 weeks
--	--	--------	--

<b>310Q Auto Body Repairer</b> 8 weeks/Level 1, 2 Certificate (ABR3)	Apprenticeship – Branch II – Block Release*	London	Must be a registered apprentice with the Ministry of Labour, Immigration, Training and Skills Development (MLITSD), <b>AND</b> an active member of Skilled Trades Ontario.  <b>Note:</b> Offers to attend class are based on seniority as determined by the Ministry. Seats are purchased by MLITSD for this class.  * Employers release apprentices from their work duties to attend in-school training (full-time) for approximately 8 weeks
---	---	--------	--

<b>310S Automotive Service Technician</b> 8 weeks/Level 1, 2; 9 weeks/Level 3 Certificate (AST5)	Apprenticeship – Block Release*	London	Must be a registered apprentice with the Ministry of Labour, Immigration, Training and Skills Development (MLITSD), <b>AND</b> an active member of Skilled Trades Ontario.  <b>Note:</b> Offers to attend class are based on seniority as determined by the Ministry. Seats are purchased by MLITSD for this class.
35 weeks/Level 1, 2, 3 Certificate (AST4)	Apprenticeship – Day Release*	London	* Day Release – apprentices typically spend four days a week in the workplace, and attend in-school training for one day a week (part-time)  Block Release – employers release apprentices from their work duties to attend in-school training (full-time) for approximately 8 weeks

<b>310T Truck and Coach Technician</b> 35 weeks/Level 1, 2, 3 Certificate (TCT3)	Apprenticeship – Day Release*	London	Must be a registered apprentice with the Ministry of Labour, Immigration, Training and Skills Development (MLITSD), <b>AND</b> an active member of Skilled Trades Ontario.  <b>Note:</b> Offers to attend class are based on seniority as determined by the Ministry. Seats are purchased by MLITSD for this class.
8 weeks/Level 1, 2; 9 weeks/Level 3 Certificate (TCT4)	Apprenticeship – Block Release*	London	*Day Release – apprentices typically spend four days a week in the workplace, and attend in-school training for one day a week (part-time)  Block Release – employers release apprentices from their work duties to attend in-school training (full-time) for approximately 8 weeks

The minimum requirements for admission to all post-secondary programs is an Ontario Secondary School Diploma with courses from the College (C), University (U), University/College (M) or Open (O) stream or equivalent or mature student with the stated academic requirements. Graduate programs require a College Diploma or University Degree or equivalent. **Please visit fanshawec.ca for more information and for the most current admission requirements.**

DELIVERY: ■ Full-time ● Full-time Online ▣ Part-time ○ Part-time Online + Co-op ◆ Weekend College | ▲ Competitive program



# WHERE TO FIND US

[fanshawec.ca/locations](https://fanshawec.ca/locations)

## London Campus

- ▶ 1001 Fanshawe College Blvd., London, Ontario
- ▶ 1000 Air Ontario Drive PVT, London, Ontario  
Fanshawe Aviation Centre
- ▶ 1764 Oxford St. E., London, Ontario  
Centre for Applied Transportation Technologies

[fanshawec.ca/london](https://fanshawec.ca/london)

## London South Campus

- ▶ 1060 Wellington Rd., London, Ontario

[fanshawec.ca/london-south](https://fanshawec.ca/london-south)

## London Downtown Campus

- ▶ 130 Dundas St., London, Ontario  
School of Tourism, Hospitality & Culinary Arts
- ▶ 137 Dundas St., London, Ontario  
School of Media & Digital Arts
- ▶ 431 Richmond St., London, Ontario  
Access Studies and Community  
Employment Services

[fanshawec.ca/downtown](https://fanshawec.ca/downtown)

## Huron/Bruce Regional Sites

Clinton and Tiverton

[fanshawec.ca/huron-bruce](https://fanshawec.ca/huron-bruce)

## St. Thomas/Elgin Regional Campus

120 Bill Martyn Parkway,  
St. Thomas, Ontario

[fanshawec.ca/stthomas](https://fanshawec.ca/stthomas)

## Woodstock/Oxford Regional Campus

369 Finkle Street,  
Woodstock, Ontario

[fanshawec.ca/woodstock](https://fanshawec.ca/woodstock)

## Simcoe/Norfolk Regional Campus

634 Ireland Road,  
Simcoe, Ontario

[fanshawec.ca/simcoe](https://fanshawec.ca/simcoe)

